

Free Concert!

HOMELAND 2013

Celebrate the Glory of America!

June 28 & 29

7:00 PM

Auburn Library Garden Theater

350 Nevada St., Auburn, CA

*A Gift of The Heart, in
collaboration with
Placer Pops Chorale &
Auburn Grace
Community Church,
presents a powerful evening
of music celebrating our
nation's heritage!*

*Bring a picnic basket or
choose from an array of
delightful dining fare
from area vendors.*



S
P
R
I
N
G

C
O
N
C
E
R
T

2
0
1
3

PLACER POPS
CHORALE

Directed by Lorin Miller

Proudly Presents

American Spirit

THREE STAGES – Folsom Lake College

10 College Pkwy., Folsom, CA

May 11, 2013 7:30 p.m.


DIETRICH THEATRE – Sierra College

5000 Rocklin Rd., Rocklin, CA

May 18, 2013 2:00 p.m. & 7:30 p.m.

May 19, 2013 2:00 p.m.

SIERRA COLLEGE

 Osher Lifelong
Learning Institute

Jensen Smith

CERTIFIED PUBLIC ACCOUNTANTS

*"Making a Lasting Contribution
To Our Clients, To Our Community, To Our Profession."*



Jennifer M. Jensen, CPA
Masters in Taxation



Lisette L. Hutchens, CPA

❖ **Income Tax Preparation**

- ◆ Individual
- ◆ Business
 - ◆ Sole Proprietor
 - ◆ Partnership
 - ◆ Limited Liability Company
 - ◆ Corporation
- ◆ Estates
- ◆ Trusts

- ❖ **Small Business Consulting**
- ❖ **Estate Planning**
- ❖ **Audit, Review & Compilation Services**



661 5th Street, Suite 101 ❖ Lincoln, CA
Phone (916) 434-1662 ❖ Fax (916)434-1090

ABOUT US

The Placer Pops Chorale, led by Artistic/Musical Director Lorin Miller, is an auditioned choral group of approximately 65 singers that typically performs with its own orchestra. The Chorale puts on two major concert series each year, in May and in December, along with occasional special appearances and benefit performances. These professional-quality concerts generally sell out weeks in advance. What attracts people to this Chorale is the energy, beauty and flair of each crowd-pleasing program.

Taken largely from the American tradition, the Chorale's music represents a variety of styles, with a strong emphasis on the popular music of the last 75 years, including the best of Broadway and Hollywood. The group is diverse in nature, and has participants of all ages who are brought together by the thrill of making beautiful music together.

Under the inspired leadership of Lorin, the reputation of the Chorale has soared in recent years, drawing music lovers in excess of 3,000 to its Christmas concerts, and nearly that many to its spring concerts. Audience members come back year after year, knowing from experience that in each show they will be treated to something truly exceptional.

UPCOMING PLACER POPS CHORALE PERFORMANCES

HOMELAND 2013
June 28 & 29 7:00 p.m.
Auburn Library Garden Theatre
350 Nevada Street, Auburn CA.



CANDLELIGHT CONCERT 2013

| | |
|------------------------|------------------|
| December 13, 7:30 p.m. | Dietrich Theatre |
| December 14, 2:00 p.m. | Dietrich Theatre |
| December 15, 2:00 p.m. | Dietrich Theatre |
| December 21, 2:00 p.m. | Three Stages |
| December 22, 2:00 p.m. | Three Stages |

Check our website for any special appearance information at:
www.placerpops.org

COME SING WITH US

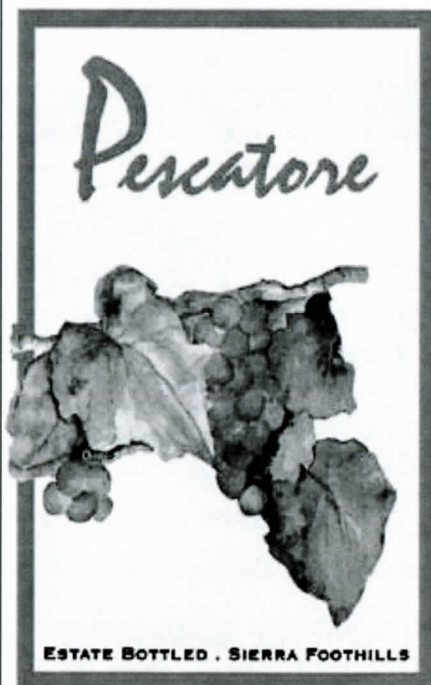
Auditions are ongoing

For audition information check our website at
www.placerpops.org

You may also contact us by mail at:
P.O. Box 7237, Auburn, CA 95604-7237
or link to us with your cell phone



Fall rehearsals begin August 26, 2013 at 6:30 p.m.
Room D2 at Sierra College . 5000 Rocklin Rd., Rocklin, CA



Estate Bottled Wines

Tasting Room Hours:
12:00 to 5:00 p.m.
Saturdays and Sundays

7055 Ridge Road
Newcastle, CA 95658

Ph: (916) 663-1422

Visit our Website at:
pescatorewines.com

BOTTLED WATER AVAILABLE AT DIETRICH THEATRE

Bottled water is available at Dietrich Theatre during intermission.
A donation of \$1.00 per bottle is requested.

COME VISIT OUR TABLE IN THE LOBBY and sign up to be on our mailing list! We won't share your information with anyone. We will also have information for you regarding auditions and rehearsals.

A FEW REMINDERS

Pagers and mobile phones: The audience is asked to turn paging devices and cellular phones OFF or to a NO SOUND setting upon entering the auditorium.

Unauthorized use of cameras or any recording device is prohibited during the performance.

Food and/or beverages are not allowed in the auditorium.

Latecomers: Curtain times are prompt. As a courtesy to our audience and performers, late arrivals will be seated by an usher at an appropriate time.

SUMMER E-WASTE EVENT AUBURN SATURDAY JUNE 13, 9:00 A.M. - 1:00 P.M.

We will accept: CDs, speakers, keyboards, mice, PDAs, digital cameras, zip drives, telephones, cell phones, printers, monitors, televisions, desktop and notebook PCs, VCRs, stereo, copiers, laser and multifunction scanners and fax machines, small household appliances such as toasters, mixers & blenders, and vacuum cleaners (with the dust bag removed).

We cannot accept: Large household appliances (i.e. refrigerators, washers, dryers, etc.) furniture, hazardous household waste including batteries, car batteries, paint, pesticides, used oil, cleaning supplies, fluorescent light bulbs, water heaters, tires, etc.

CHECK OUR WEBSITE FOR SUMMER E-WASTE EVENT INFORMATION

www.placerpops.org

studio Belladon



Diane Screeton
Owner, Hair Designer

(916) 474-9304

To Schedule your
Appointment Online:
www.StudioOne11.com

9951 Fairway Drive, #100
Roseville, CA 95678

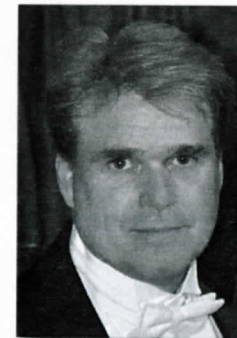
JOYCE SCOLNICK

Joyce Scolnick has performed throughout the Sacramento region for over 30 years. In 2009, Ms. Scolnick made her Mondavi Center debut singing "Feel the Spirit" with the Sacramento Choral Society and Orchestra, followed by encore performances in Victoria and Vancouver, Canada. In addition to past performances with the Placer Pops Chorale, Joyce treasures her experiences as a featured soloist and ensemble singer with the Sierra Community Chorus, the Sacramento Philharmonic, the Sacramento Symphony, the CSUS University Chorus and the Sacramento Opera. Joyce has appeared in over 25 musical theater and light opera productions. Joyce teaches voice and piano privately in Folsom, and is an applied voice instructor at William Jessup University.



LORIN MILLER, Director

In his ninth year as Artistic/Musical Director of the Placer Pops Chorale, Lorin Miller brings a distinguished background as a solo performer, music educator and choral director. In addition to his work with the Chorale, Lorin serves as Executive Musical Director and co-founder of "A Gift of the Heart," a Placer County performing arts organization benefiting local charities. He currently serves on the voice faculty of William Jessup University, as well as Musical Director for Auburn Grace Community Church. A California native, Lorin grew up in Grass Valley, where he developed a deep love of music. He holds an undergraduate degree and a



master's degree in Humanities, with a music performance concentration. After graduation, he produced, recorded and toured with a solo album before pursuing film scoring at UCLA. Following his successful career in Hollywood television production, Lorin returned to this area and to his love of music. Lorin has performed nationally and internationally, throughout Europe and Asia, in a variety of styles from Bach to Broadway. This extensive solo career has most recently included European tours with "A Gift of the Heart" to Slovenia during the fall of 2009, and with the Sacramento Choral Society and Orchestra to Vienna, Prague, Budapest and Munich in the summer of 2004. Lorin has performed occasionally as a tenor with the Sacramento Choral Society and Orchestra. He led the Placer Pops Chorale on a four-city tour of Ireland in July of 2012.

ELIZABETH STANLEY, Director

William Jessup University Master Works Chorale

Elizabeth Stanley serves as Professor in the Department of Music at William Jessup University. "Liz" received her Music B.A., M.A. in Vocal Performance, and credential from Cal State University, Hayward (now Cal State East Bay) and is completing doctoral work at Boston University. She has been involved in music education at the secondary and college levels since 1980. She is a frequent adjudicator for ACSI Musicale competition and for other district and regional solo, ensemble, and choral festivals and has provided seminars on vocal and choral technique for ACSI and BASS conventions in the Sacramento and San Francisco Bay Areas. Elizabeth has prepared choral groups for the Auburn Symphony Orchestra, the California State Governor's and Placer County Prayer Breakfasts and the Placer County visit of First Lady Laura Bush. Married to Carl Stanley, double bass performer and personnel manager for the Oakland East Bay Symphony, they have one son, Carl Franklin serving as a bandsman in the United States Air Force.

KELLER WILLIAMS
REALTY



Penny Carolan

Carolans Properties Group
Broker, CA DRE # 01053722



916.871.3860 Direct
916.253.1833 Office

Penny@PennyCarolan.com
www.PennyCarolan.com



945 Orchard Creek Lane, Suite 300
Lincoln, CA 95648

ROBERTS FINANCIAL SERVICES



DON L. ROBERTS, CPA

Personalized Service to You

Tax Accounting **Consulting Loans**

6227 Camellia Circle
Rocklin, CA 95765-5872

Phone: 916-435-9900
Fax: 916-435-0149
E-Mail: dlrcpa@hotmail.com
Cell Phone: 916-549-5389



Music & More Arts Academy
is a Performing Arts School
offering both private and group
classes for Ages 3 – Adult:

- Acting
- Dance
- Theatre
- Voice
- Piano
- Strings
- Wind
- Brass

Study with master teachers

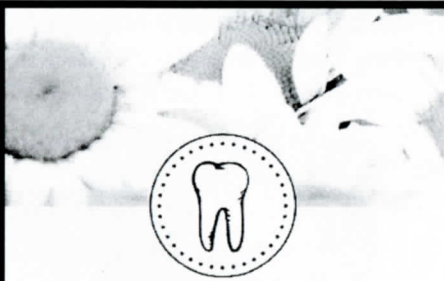
REGISTER NOW FOR CLASSES & WORKSHOPS

*Music & More
Arts Academy*
Established 1983

11596 D. Ave. Auburn, CA 95603

530-885-0594

www.musicandmore.net



DENTAL HYGIENE SERVICE

Portable Services for
Homebound & Special Needs Clients

Brenda Paquin, RDHAP

(916) 247-1743

brenrdhap2010@comcast.net

PO Box 982, Citrus Heights, CA 95611

Osher Lifelong
Learning Institute
SIERRA COLLEGE

OSHER LIFELONG LEARNING INSTITUTE

The Osher Lifelong Learning Institute was developed by Sierra College in order to make their belief that learning is a lifetime pursuit, a reality. The institute offers a wide range of challenging, high-quality learning experiences for active adults. Although these courses are designed for adults age 55 and over, there is no age limit for enrollment. Any adult student is welcome.

Sierra College is one of only two community colleges nationally to receive a grant from The Bernard Osher Foundation to meet the educational needs of older adults. The Sierra College OLLI is five years old and offers over 175 classes annually for more than 4000 students. The classes are all tuition-free but do require pre-registration.

SIERRA COLLEGE

Since its founding in 1936, Sierra College has become a cornerstone of the community, meeting the needs of those it serves by providing quality education, enriching lives and helping businesses thrive. With its award-winning faculty, Sierra College is ranked first in Northern California for transfers to four-year universities, and also offers career/technical training and classes to upgrade job skills. We are proud to have been affiliated with this distinguished academic institution since our choral group was formed in 1991, and greatly appreciate its support over the years. We thank Sierra College for this, and for the generous use of rehearsal space in the Music Building on campus throughout the school year, as well as performance space at Dietrich Theatre in December and May.

THANK YOU

Producing our concerts requires an incredible amount of dedication and hard work from many people, most visibly those of us who appear on stage. However, the services of our Chorale Auxiliary are equally indispensable to the success of each performance we give. These generous volunteers, mostly family members of the Chorale, perform a variety of tasks which assist audience members in the theater and provide support to the singers backstage. Our Auxiliary members serve with enthusiasm and skill, and we want to publicly thank them for their time and talent!



INAUGURAL PLACER POPS CHORALE

FUNDRAISING GOLF TOURNAMENT

SUNSET WHITNEY GOLF CLUB

MONDAY, OCTOBER 7, 2013

8:30 A.M. SHOTGUN START

18-HOLE SCRAMBLE



EVENT DETAILS

\$80 ENTRY FEE

INCLUDES:

—
RANGE BALLS

—
GOLF CART

—
BBQ LUNCH

—
PRIZES FOR
LONGEST DRIVE
CLOSEST TO PIN
BEST TEAM SCORE

—
FOR MORE
INFORMATION
CONTACT:

Anne Duda

acwd301950@hotmail.com

(916) 797-2372

Dear Placer Pops Chorale Audience,

Thank you for attending this performance of Placer Pops Chorale's "American Spirit" 2013 concert – one we hope will leave you feeling uplifted and entertained as we combine our talents with those of William Jessup University's Master Works Chorale as our guests for this performance.

What an exciting time to be the president of this Chorale! I've had the honor of being on hand as Placer Pops Chorale grew to become a non-profit organization, while witnessing the challenges that vision presented to us. I was also privileged to be able to coordinate our first overseas concert tour to Ireland -- a truly enjoyable experience!

In addition to rehearsing for our customary holiday concert program in the Fall, the excitement will be mounting for our second European tour, this time in balmy, spectacular Barcelona, Spain. If you have never accompanied a group on an arts tour, it's an unforgettable experience, especially with this lively group. We invite you to consider joining us for a week-long adventure in July 2014. Details are available through our web site at placerpops.org.

The most exciting and rewarding part about being president of this group is working with the individuals who make up this organization. These musically talented members use their skills to make it possible for Placer Pops Chorale to function and flourish, enabling us to grow in quality as we fulfill our mission to bring the best choral music to this area and beyond. I enjoy leading such a talented and devoted group of individuals while supporting our Director as he takes Placer Pops Chorale to new heights and stretches us toward even greater levels of achievement and entertainment value.


Thank you for supporting our endeavors.

Juli A. Cuneo

Capezio®

Dance-Theatre Shop

www.capeziosacramento.com



Dance Shoes and Apparel

for
*Pointe, Ballet, Tap, Jazz, Hip Hop, Lyrical, Theatre, Zumba,
Liturgical, Salsa, Tango, Latin, Ballroom, and Swing.*

Leotards, Tights, Shoes, Legwarmers, Skirts, and much more.

*Expert pointe shoe fittings
available at*

| | |
|-----------------------|----------------------------|
| <i>Sacramento</i> | <i>Rocklin</i> |
| <i>3839 H Street</i> | <i>4800 Granite Dr. B4</i> |
| <i>(916) 452-2255</i> | <i>(916) 630-1448</i> |

PERFORMANCE ORDER

Africa.....Words and Music by David Paich and Jeff Porcaro
Arr. by Philip Lawson

Ensemble

When You Believe, From “*The Prince of Egypt*”

Words and Music by Stephen Schwartz, Choral Arr. by Audrey Snyder
Instrumental Accompaniment by John Moss

Lyndsay and Stacy Barham, Soloists at Three Stages

Hannah Barnett and Tony Roberts, Soloists at Dietrich Theatre May 18th

Debbie Astle and Robin Haney, Soloists at Dietrich Theatre May 19th

Feel The Spirit (*a cycle of spirituals*).....Arr. by John Rutter

Performed at Three Stages by Placer Pops Chorale and William Jessup University Master

Works Chorale

Joyce Scolnick, Soloist

Stacy Barham, Julie Cuneo, Noreen Barnett, Soloists for “Do Lord”

INTERMISSION

Sleep.....Words from Charles Anthony Silvestri, Music by Eric Whitacre

Three Stages Performance

William Jessup University Master Works Chorale

Directed by Liz Stanley, Tamra Rogers Accompanist

The Lord Bless You and Keep You.....John Rutter

Tamra Rogers Student Conductor, Marena Bickford Accompanist

O Sifuni Mungu.....Arr. by David Maddux

Witness, Traditional Spiritual.....Arr. by Jack Halloran

SATB Arr. by Dick Bolks

Mission: Impossible Theme.....By Lalo Schifrin, Arr. by Roger Emerson

Ensemble

Ragtime, (Choral Selections).....Lyrics by Lynn Ahrens

Music by Stephen Flaherty, Arr. by Jeff Funk

Don Roberts and Julie Cuneo, Soloists

The Seal Lullaby.....Words from Rudyard Kipling, Music by Eric Whitacre

Hymn to the Fallen, from “*Saving Private Ryan*”.....by John Williams

The Promise of Living, from “*The Tender Land*”.....Words by Horace Everett

Music by Aaron Copeland

Eric Whitacre – Composer, conductor, broadcaster and public speaker

Placer Pops Chorale is thrilled to present two compositions by Eric Whitacre in today’s concert; “Sleep” and “Seal Lullaby”. Though he did not become interested in classical music until joining his college choir, he went on to receive a Master of Music degree from Juilliard School of Music in New York. Mr. Whitacre has won numerous prestigious awards including a Grammy, the ASCAP Harold Arlen Award and the Richard Rodgers Award. One of his inspired projects utilizing the wonder of modern technology, the Virtual Choir combines a live choir conducted by Mr. Whitacre with individual singers from around the world, taking part in a live choral presentation via the internet! (You may be interested in viewing the Virtual Choir online through YouTube!) Many of Mr. Whitacre’s works have become part of the standard choral repertoires in universities throughout the world.

“The Seal Lullaby” combines the text of Rudyard Kipling with the haunting beauty of Mr. Whitacre’s music. “Sleep” unites music that was written in 1999 with text written especially for the music many years later by Charles Anthony Silvestri. The story behind the writing of each piece is worth reading if you are interested. You will find much information about the work of Eric Whitacre online, and we would encourage you to do so. We hope that you enjoy our presentation of both pieces.

INSTRUMENTALISTS

| | |
|-------------------------------------|-------------|
| Jesse Barrett..... | Oboe |
| Mickey Bennett..... | String Bass |
| Serrena Carlucci..... | Percussion |
| Angelina Contreras/Chris Jones..... | French Horn |
| Elizabeth Coronata..... | Flute |
| Gary Dilworth..... | Trumpet |
| Linda Glenwinkel..... | Keyboard |
| Brad Hammett..... | Trombone |
| Eva Kidwell..... | Bassoon |
| Alan Koshiyama..... | Keyboard |
| Mark Leftridge..... | Drums |
| Patricia Leftridge..... | Piano |
| Bobby Rogers..... | Clarinet |
| Brandy Ruscica..... | Cello |
| Bill Sidney..... | Saxophone |

WILLIAM JESSUP UNIVERSITY MASTER WORKS CHORALE

Master Works Chorale provides students with performance group experience centered in traditional choral repertoire. The group emphasis is on rehearsal and performance of works drawn from the Renaissance, Baroque, Classical, Romantic and Contemporary periods of music. The Master Works Chorale is open to all William Jessup University students regardless of major. The Chorale performs approximately three times each semester. Master Works Chorale is directed by Liz Stanley.

| | | |
|------------------|--------------------|-----------------|
| Nicole Adams | Jessica Heath | Justin Parrish |
| Elisabeth Asher | Rose Hodges | Sophia Parrott |
| Lauren Babros | Jessica Hoffart | Jeremy Paz |
| Meredith Barnack | Amber Johnson | Raelle Roberson |
| Marena Bickford | Ryan Jow | Tamra Rogers |
| Sarah Bourg | Joshua Lane | David Schwartz |
| Megan Carroll | Jacob Langstff | Zachary Serface |
| Melinda Champion | Christina MacNeill | Stephen Severin |
| Luke Elrod | Janet McDonald | Alyssa Spoon |
| Rachel Galvan | Kristine McDonald | Marcus Steele |
| Darin Garr | Dalton McNeeley | Jon Usry |
| Joshua Groat | Taylor Moe | Patrick Vital |
| Caitlin Hagan | Leila Morphy | Valerie Wright |
| | Ronald Orallo | |

PLACER POPS CHORALE MEMBERS

Soprano 1

Debbie Astle**
 Hannah Barnett
 Noreen Barnett
 Vivian Baughman* **
 Leann Haugen
 Keely Scanlan
 Joyce Scolnick
 Karin Teisl

Soprano 2

Kathy Adams Parke**
 Johanna Avery
 Kathy Bryant
 Julie Cuneo**
 Terrie Jaramillo*
 Eunice Kim
 Ronda Pearce
 Marissa Pilgrim
 Alexis Rosenau
 Patrice Rosenau

Alto 1

Lyndsay Barham**
 Carol Des Voigne
 Kate Linehan-Janzen
 Laurie Meadows
 Caroline Newman
 Brenda Paquin*
 Lucille Putnam
 Marley Savery
 Sue Stushek**
 Nancy Tellefson
 Lynne Wetzel

Alto 2

Stacy Barham**
 Marian Caldwell*
 Anne Duda
 Robin Haney**
 Bev Haran
 Kathy Hilberg
 Dena Kouremetis**
 Margit Miller
 Christi Molina
 Josephine Roscoe
 Tukey Seagraves
 Noël Shusted**
 Anne Sterling**

Tenor 1

Gary Avery
 Dana Caldwell
 Patrick Caldwell**
 Joan Griffin
 Connie Moller
 Wanda Peabody
 Guy Pilgrim**
 Dean Rice*

Tenor 2

Frank Chapman
 George Kouremetis
 Don Roberts**
 Dave Seagraves

Baritone/Bass

Jack Janzen
 Kevin Kurtz**
 Al Loeffler**
 Dick Maxey
 Kent McCarley
 Marty Pinckard
 Zach Quiroz
 Tony Roberts**
 Coy Russell
 Glenn Tsukimura* **

* Section Leader
 **Ensemble

CHORALE COUNCIL

Officers

| | |
|---------------------|--------------|
| President..... | Julie Cuneo |
| Vice President..... | Debbie Astle |
| Secretary..... | Robin Haney |
| Treasurer..... | Don Roberts |

Members at Large

Vivian Baughman, Charlotte Rice, Anne Sterling, Anne Duda
 Nancy Bowman, Terrie Jaramillo, Dean Rice

**G
R
O
O
M
I
N
G**



**D
R
Y
G
O
O
D
S**

FASHION FO PAWS

**Doggy Couture • Garden • Accessories
Doggy Spa & Premium Dog Food**

**10%
OFF
Any Retail
Products**

**New
Customers !!
\$5.00 off
Grooming**



Sold Here!

**Hours: Tues - Sat 10:30-6:30
Sun-Mon by appointment**

916-645-9550

577 Lincoln Blvd., Lincoln, CA 95648

BILL EADS RV'S INC.



**Bill & Rosie
Eads**

**OWNERS
Dealer 44674**

“Why Pay Retail?”

**4409 Granite Drive
Rocklin, CA 95677
MA: 2199 Blue Heron Loop
Lincoln, CA 95648
(916) 624-7600**

**eads1238@sbcglobal.net
WEBSITE: billeadsrv.com**

Park Drive Cleaners

2221 Sunset Blvd. Suite 107
Rocklin, California 95765
916.435.4818

John & Mira Kim

M-F: 7 a.m.-6:30 p.m.
Sat: 9 a.m.-3:00 p.m.

Email: jdkmk@sbcglobal.net

**NEWCASTLE
PRODUCE**



Your best source for fresh,
local produce, gourmet
meals to go, and more!

(916) 663.2016

We're just one minute from I-80
9230 Cypress St., Newcastle

Open Daily: M-F 8-6, Sat. 8-5, Sun. 10-5

www.NewcastleProduce.com

Sierra Hills Framing



Custom Picture Framing & Artwork

531 Lincoln Blvd., Lincoln, CA

(916) 645.1644

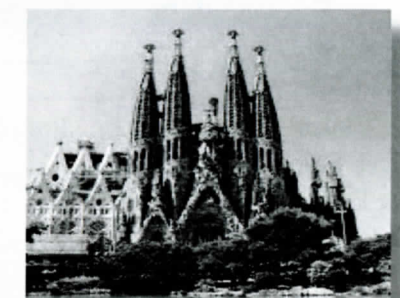
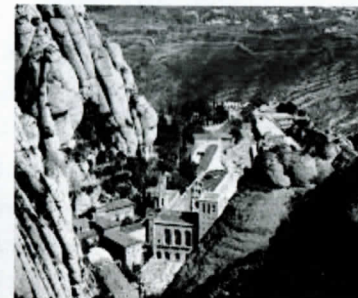
www.sierrahillsframing.com

Join Placer Pops Chorale's Tour to Barcelona in 2014

Placer Pops Chorale is bullish on international travel with music in mind. The group's first performance tour in Ireland in July 2012 only served to whet their collective appetite and led to planning a Barcelona trip for the summer of 2014.

They now invite loyal PPC attendees and fellow musicians to not only attend one or more of their three performances in and around Barcelona, but also join the lively group as they stroll along the Ramblas, dig their toes in the Mediterranean sand, visit the monastery of Montserrat and marvel at Gaudi's magnificent Sagrada Familia, a towering cathedral whose completion has been ongoing since 1882. The 7-day trip will include airfare, hotel, some meals and all tours, along with the company of some dedicated singers and musicians. Barcelona is an ideal first visit destination to Europe as well as a gateway city to Madrid, Paris, London or Rome and the starting point for a number of cruises. Tours include Placa Catalunya, the Cathedral, the Casa Mila, the Sagrada Familia (Gaudi), the Palau de la Musica, and Montserrat.

For pricing and more information about how to be included on this tour, visit the PPC web site at placerpops.org or contact Chorale President Julie Cuneo at singingjules@sbcglobal.net.



SPECIAL THANKS TO

Director
Lorin Miller

Stage Manager
Sharon Greenhagen

Stage Design
Ronda Pearce

Costumes/Wardrobe
Nancy Bowman
Caroline Newman

Make-up
Charlotte Rice
Noel Stushek

Graphic Design/Ads
Charlotte Rice

**Instrumentalist
Coordinator**
Julie Cuneo

Music Librarian
Vivian Baughman

Mailing List Coordinator
Terrie Jaramillo

**Chorale Food
Coordinators**
Connie Moller
Mikkel Moller

Strike/Set-up
Don Roberts

Practice CD
Dean Rice

Box Office
Sandra Morrison

Program
Charlotte Rice
Dean Rice

Printing
Mark Wagner

Head Usher / Coordinator
Dean Sterling

Chorus Website Design
Dave Seagraves

Website Maintenance
Kevin Kurtz

Picture Board
Joan Griffin

Marketing/Writing
Anne Sterling

Advance Ticket Sales
Robin Haney

Dietrich Theatre:

Audio
Paul Albrecht

Theater Manager
Thor Tivol

Lighting Design
Patrick Thrasher

Stage Hands
Theatre Students

Three Stages:

Executive Director
Dave Pier

Technical Director
Sam Coquerille

Three Stages Liaison
Grace Earl

Audio
Paul Albrecht

PPC ENTERTAINMENT BOARD MEMBERS

Grace Earl.....President / CEO
Lorin Miller.....Artistic Director
Julie Cuneo.....President, Placer Pops Chorale Representative
Warren Schwegel.....Director
Greg Flessing.....Director
Bob Churchwell.....Director
Sandra Morrison.....Secretary
Don Roberts.....Treasurer, Placer Pops Chorale Representative

Placer Pops Chorale: Help Us Grow!

Starting out as Sierra Community Chorus many years ago, little did the group know it would grow to the level of entertainment quality and size it is today, performing not only in northern California, but touring Europe as well.

The purpose of this non-profit (501 (c) 3) organization is to provide the members of our community the opportunity to participate in a performing arts organization, and to present a variety of live, quality performances for the entertainment, education and enrichment of the greater Sacramento area and beyond.

Future plans include not only the expansion of this mission and venues, but also the opportunity to extend scholarships to talented students in our area, who would not otherwise be able to continue their music education.

We welcome donations from individuals, businesses and organizations, the levels of which are outlined below. Watch our web site at placerpops.org for ways to support Placer Pops Chorale and its cause, as well as for corporate sponsors who make it possible for the group to thrive and grow. For information about how you can help, contact Grace Earl at 530-878-0226

Donor Program Levels:

- Level 1: *Friend* (\$1 - \$100)
Name in program, Car magnet
- Level 2: *Patron* (\$101 - \$250)
Name in program, Car magnet, Certificate
- Level 3: *Associate* (\$251 - \$500)
Name in program, Car magnet, Certificate, Preferred seating
- Level 4: *Benefactor* (\$501 - \$1,000)
Name in program, Car Magnet, Certificate, Preferred seating, Reception
- Level 5: *Supporter* (\$1,000 - \$2,500)
Name in program, Car magnet, Certificate, Preferred seating, Reception, 2 Comp tickets (Spring & Fall)
- Level 6: *Advocate* (Over \$2,500)
Name in program, Car magnet, Certificate, Preferred seating, Reception, 2 Comp tickets (Spring & Fall), Plaque